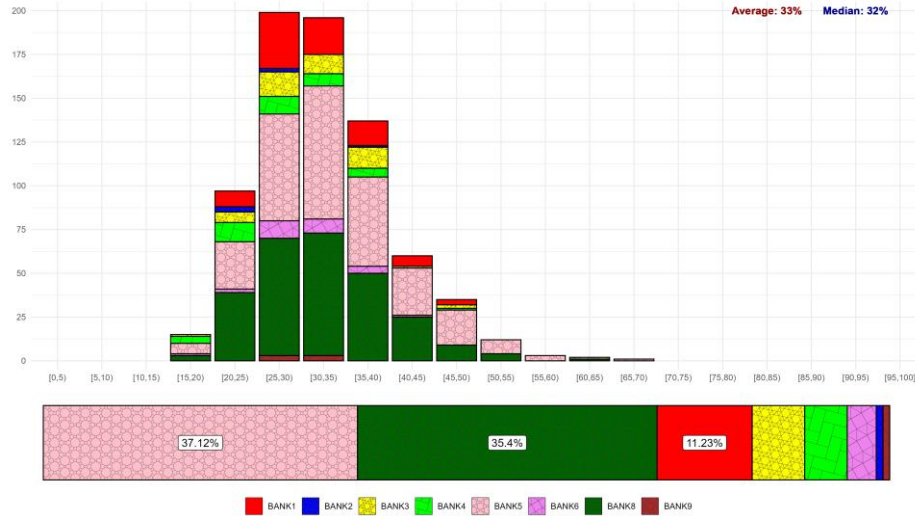
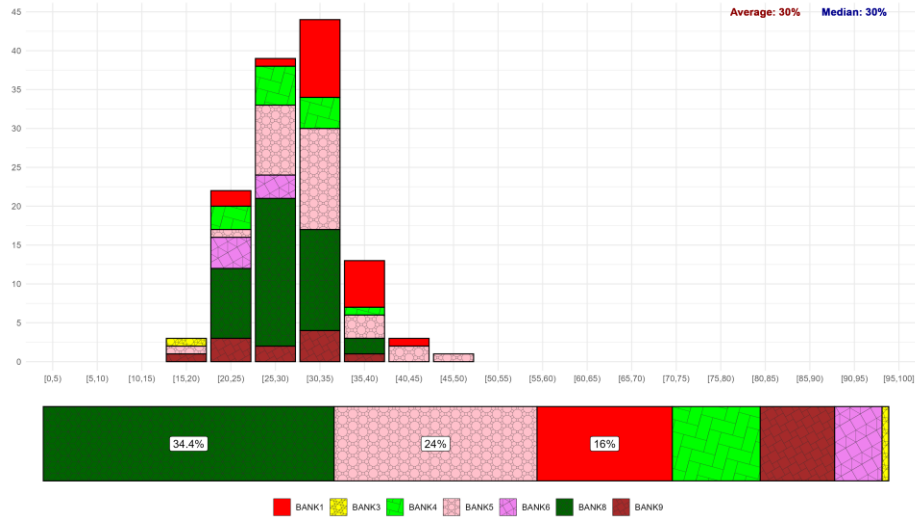


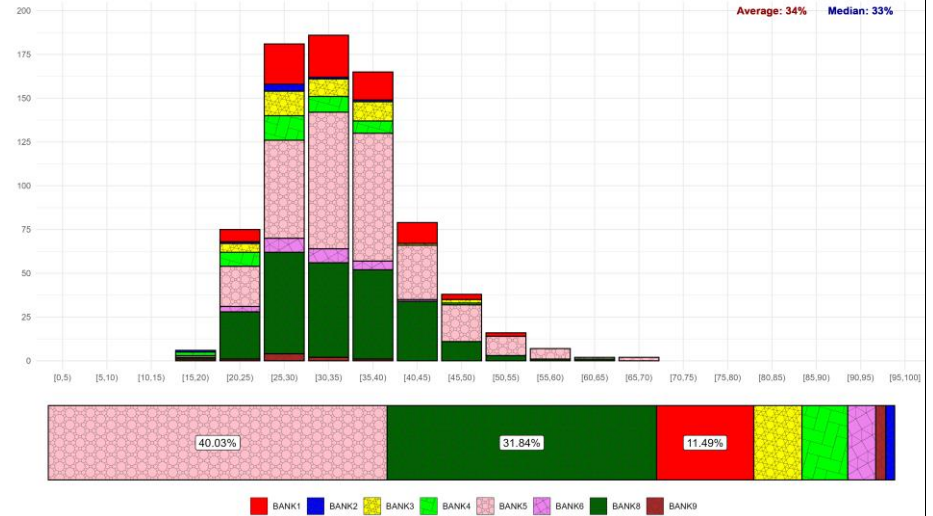
Distribution of the daily maximum share of a contributor in the WIRF
Eligible Transactions Pool volume after Volume Scaling-down Procedure with Minimum Volume Threshold at 0m in 2021-2023



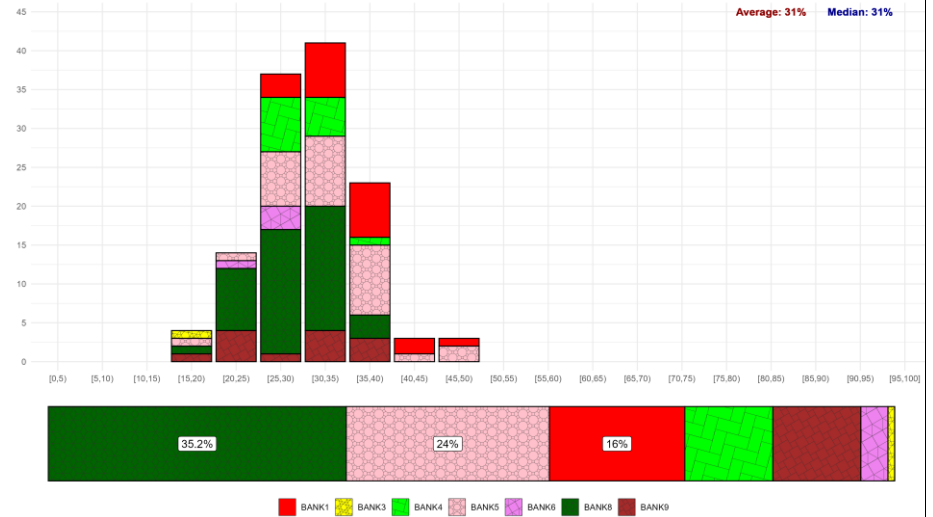
Distribution of the daily maximum share of a contributor in the WIRF
Eligible Transactions Pool volume after Volume Scaling-down Procedure with Minimum Volume Threshold at 0m in H1'2024



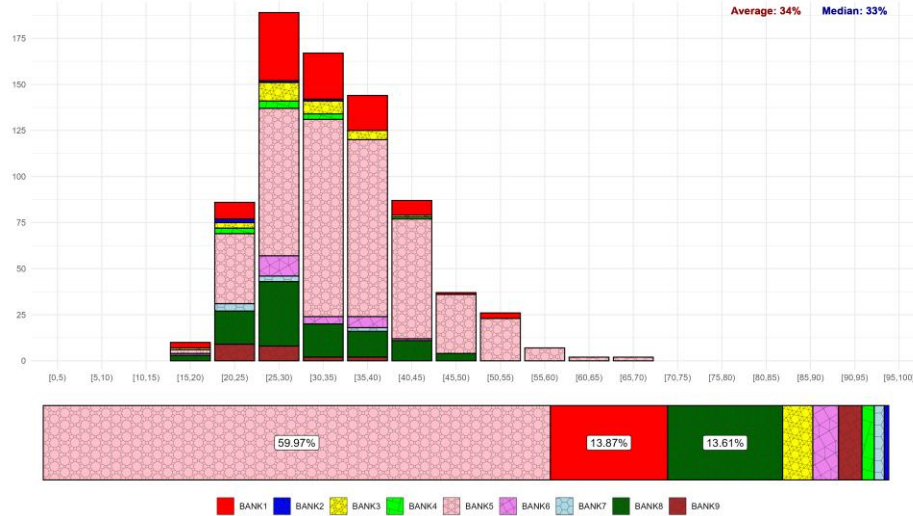
Distribution of the daily maximum share of a contributor in the WIRF
Eligible Transactions Pool volume after Volume Scaling-down Procedure with Minimum Volume Threshold at 30m in 2021-2023



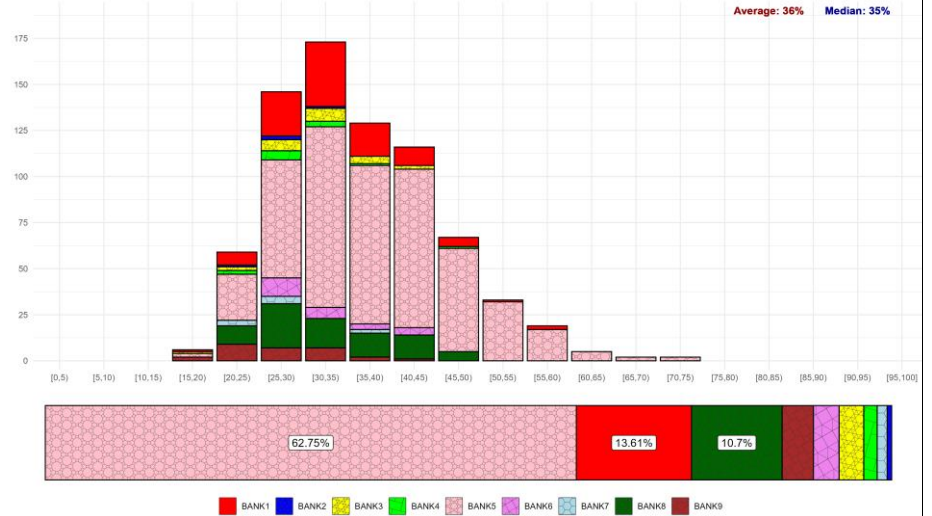
Distribution of the daily maximum share of a contributor in the WIRF
Eligible Transactions Pool volume after Volume Scaling-down Procedure with Minimum Volume Threshold at 30m in H1'2024



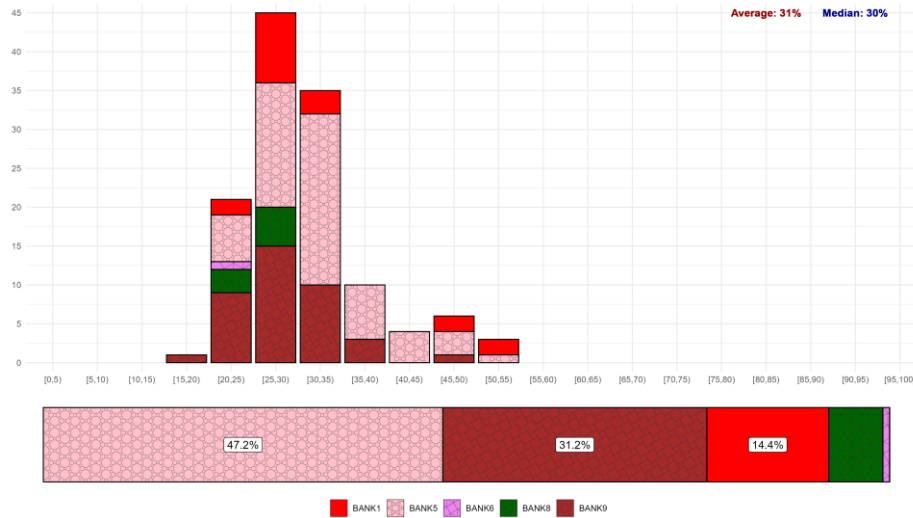
Distribution of the daily maximum share of a contributor in the WIRF+
Eligible Transactions Pool volume after Volume Scaling-down Procedure with Minimum Volume Threshold at 0m in 2021-2023



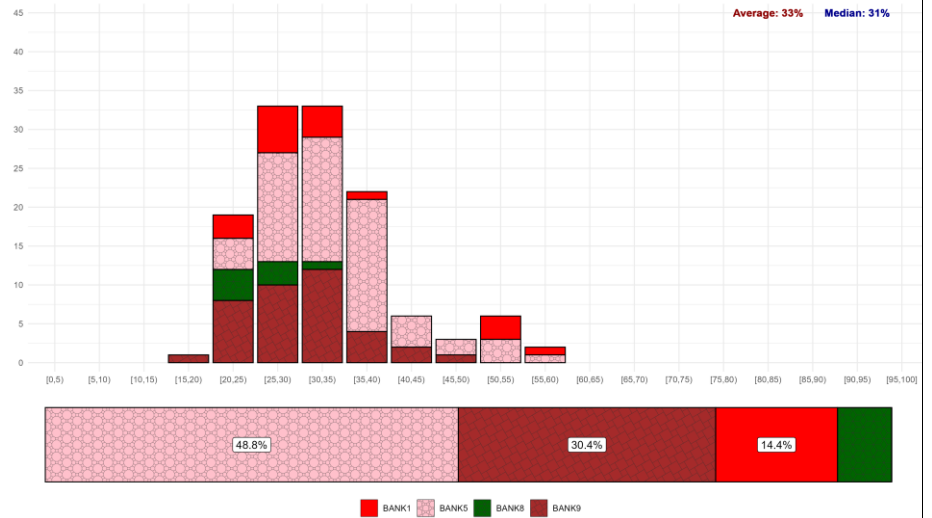
Distribution of the daily maximum share of a contributor in the WIRF+
Eligible Transactions Pool volume after Volume Scaling-down Procedure with Minimum Volume Threshold at 55m in 2021-2023



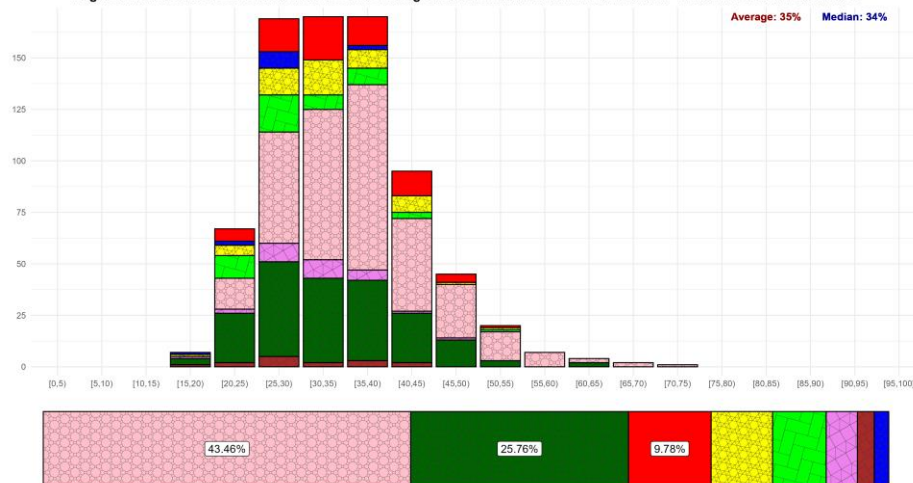
Distribution of the daily maximum share of a contributor in the WIRF+
Eligible Transactions Pool volume after Volume Scaling-down Procedure with Minimum Volume Threshold at 0m in H1'2024



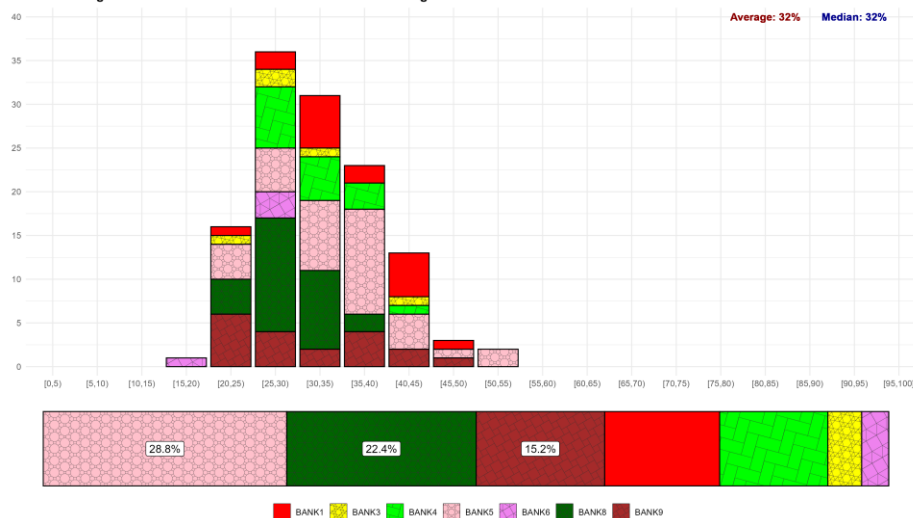
Distribution of the daily maximum share of a contributor in the WIRF+
Eligible Transactions Pool volume after Volume Scaling-down Procedure with Minimum Volume Threshold at 55m in H1'2024



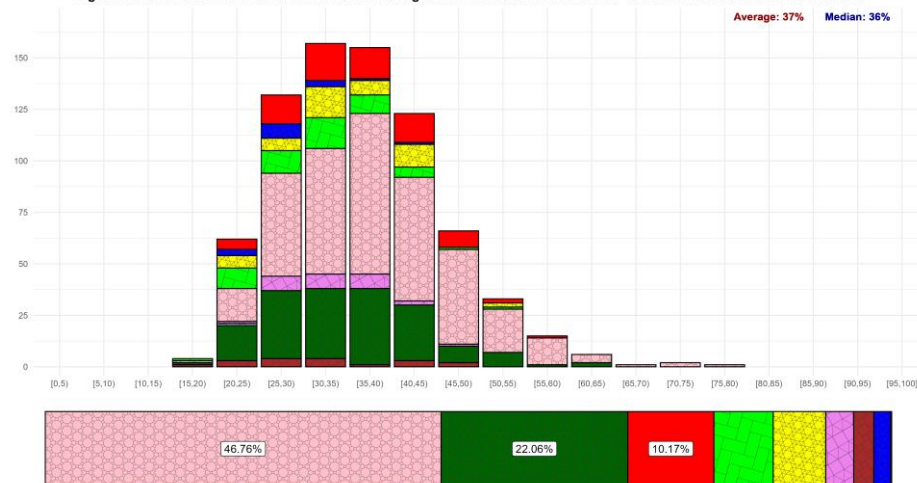
Distribution of the daily maximum share of a contributor in the WIRF-
Eligible Transactions Pool volume after Volume Scaling-down Procedure with Minimum Volume Threshold at 0m in 2021-2023



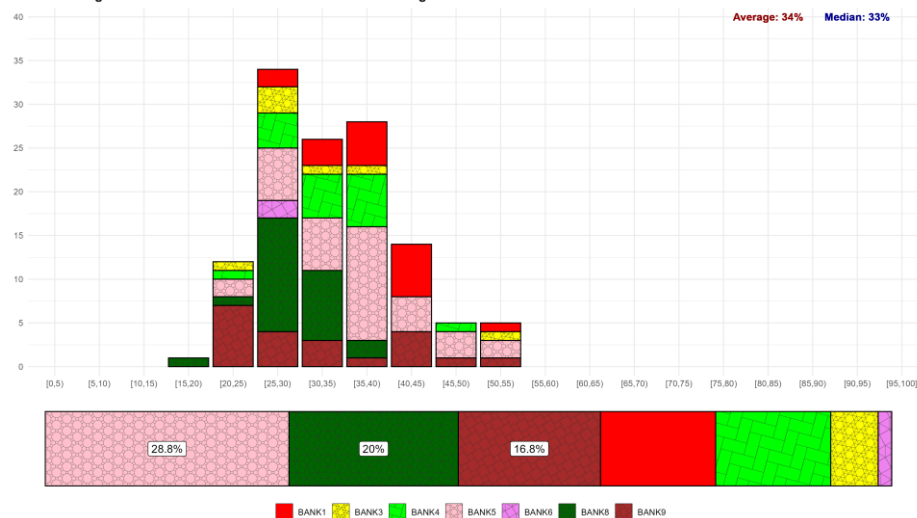
Distribution of the daily maximum share of a contributor in the WIRF-
Eligible Transactions Pool volume after Volume Scaling-down Procedure with Minimum Volume Threshold at 0m in H1'2024



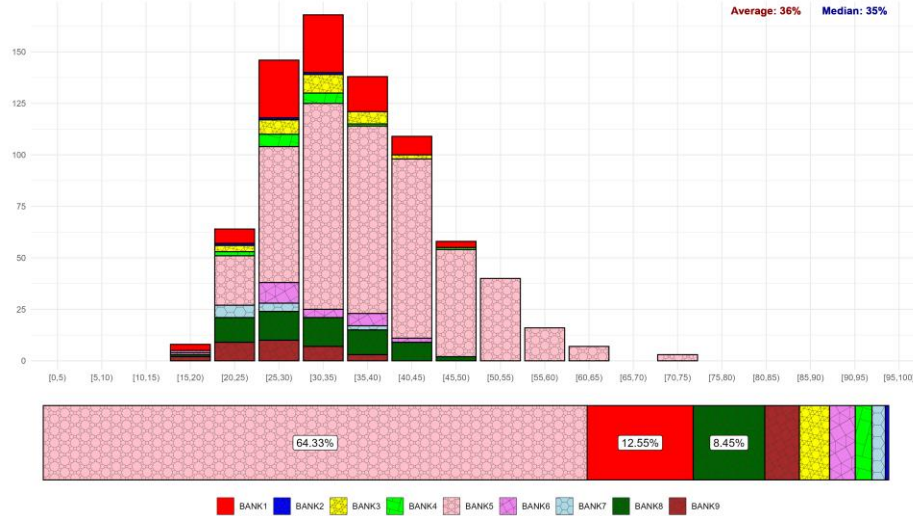
Distribution of the daily maximum share of a contributor in the WIRF-
Eligible Transactions Pool volume after Volume Scaling-down Procedure with Minimum Volume Threshold at 40m in 2021-2023



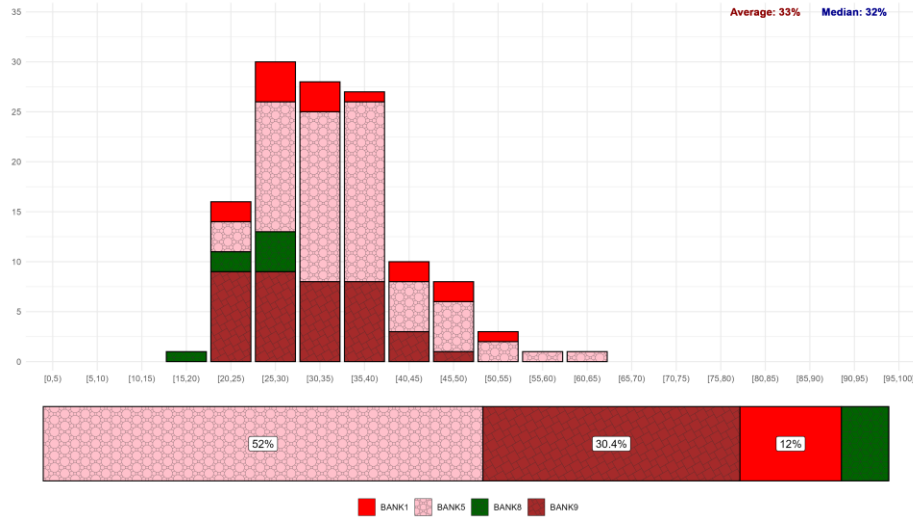
Distribution of the daily maximum share of a contributor in the WIRF-
Eligible Transactions Pool volume after Volume Scaling-down Procedure with Minimum Volume Threshold at 40m in H1'2024



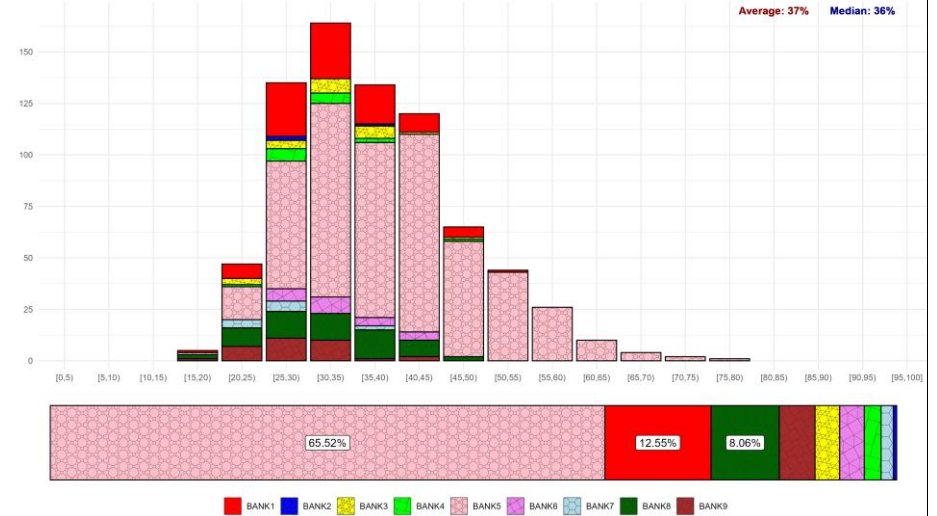
Distribution of the daily maximum share of a contributor in the WIRF+-
Eligible Transactions Pool volume after Volume Scaling-down Procedure with Minimum Volume Threshold at 0m in 2021-2023



Distribution of the daily maximum share of a contributor in the WIRF+-
Eligible Transactions Pool volume after Volume Scaling-down Procedure with Minimum Volume Threshold at 0m in H1'2024



Distribution of the daily maximum share of a contributor in the WIRF+-
Eligible Transactions Pool volume after Volume Scaling-down Procedure with Minimum Volume Threshold at 25m in 2021-2023



Distribution of the daily maximum share of a contributor in the WIRF+-
Eligible Transactions Pool volume after Volume Scaling-down Procedure with Minimum Volume Threshold at 25m in H1'2024

